



SORBY NANO
INVESTIGATION CENTRE

SORBY NANO NEWS

www.sorbynano.org

Keeping you up-to-date with news and events at the Sorby Nano Centre

Mercury Centre Launch

Sorby Nano and Mercury Centre
delivering to industry

The Department of Materials Science and Engineering of the University of Sheffield are proud to announce the launch of the Mercury Centre on the **17th November at Kelham Island Museum** in Sheffield (see www.mercurycentre.org for information and to register for the event). The Mercury Centre is an ERDF part financed initiative to provide regional companies access to the latest powder-based near net shape manufacturing technology. The Sorby Nano investigation Centre is delighted to be contributing to the Mercury Centre by providing its micro and nano scale investigation expertise.

Project Part-Financed
by the European Union
European Regional
Development Fund



The
University
Of
Sheffield.

In this issue

November 2010

Mercury Centre Launch
Sorby attends TCT Live
New Staff!

TCT LIVE 2010

Sorby attends this year's event
in Coventry

The exhibition was host to a range of analysis and additive manufacturing equipment suppliers and service providers to suit a full variety of clients. It was clear that visitors to the event were interested in the latest developments in rapid manufacturing and prototyping as this technology brings many advantages in the production of innovative products.

ContourGT-K1 Optical Profiler



Sorby has recently purchased a ContourGT-K1 Optical Profiler which provides the most reliable and

repeatable tabletop characterization available for R&D, wear, failure analysis, process control and monitoring.

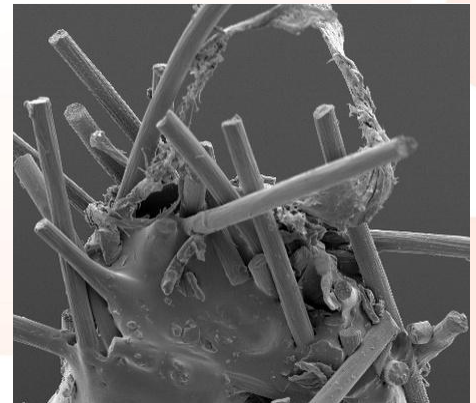
New Sorby Nano Team Member

The Sorby Nano Centre would like to welcome new team member Liam Hill to the company. Liam is a recent graduate and has taken on the role of Sorby's Events Coordinator.

He is currently working on ensuring the success of the Mercury Centre's launch night.

For more information on this event [click here](#).

[Click here](#) to see Liam's web profile



The Mercury Centre is now on twitter! [Click here](#) to follow us!



Call us on +44 (0)114 222 5981